

STRUCTURAL GENERAL NOTES

CODE

OREGON STRUCTURAL SPECIALTY CODE, 1998 EDITION

LOADS

SNOW LOAD	25 PSF + DRIFT
ROOF DEAD LOAD	7.5 PSF
SEISMIC	ZONE 3
WIND	80 MPH EXPOSURE B
WIND UPLIFT	10.5 PSF

ALUMINUM

1. ALUMINUM TO BE TYPE 6063-T5.

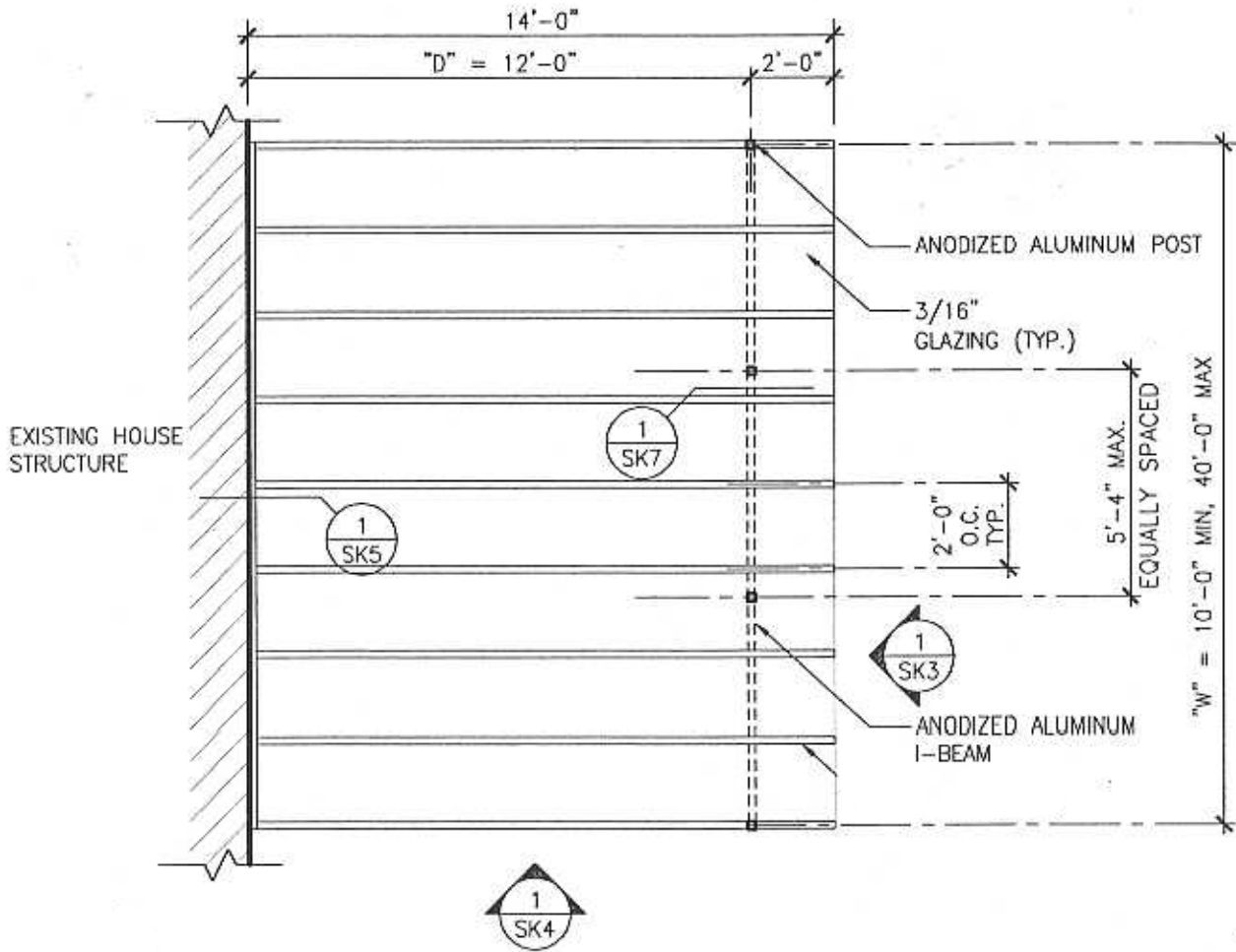
NOT FOR
CONSTRUCTION

GLAZING

1. IT MUST PASS ANSI-Z97.1 TEST FOR SAFETY GLAZING MATERIALS.
2. IT MUST HAVE A FLEXURAL STRENGTH OF 15000 PSI ACCORDING TO TEST METHOD ASTM D-790 FOR A SHEET THICKNESS OF .125".

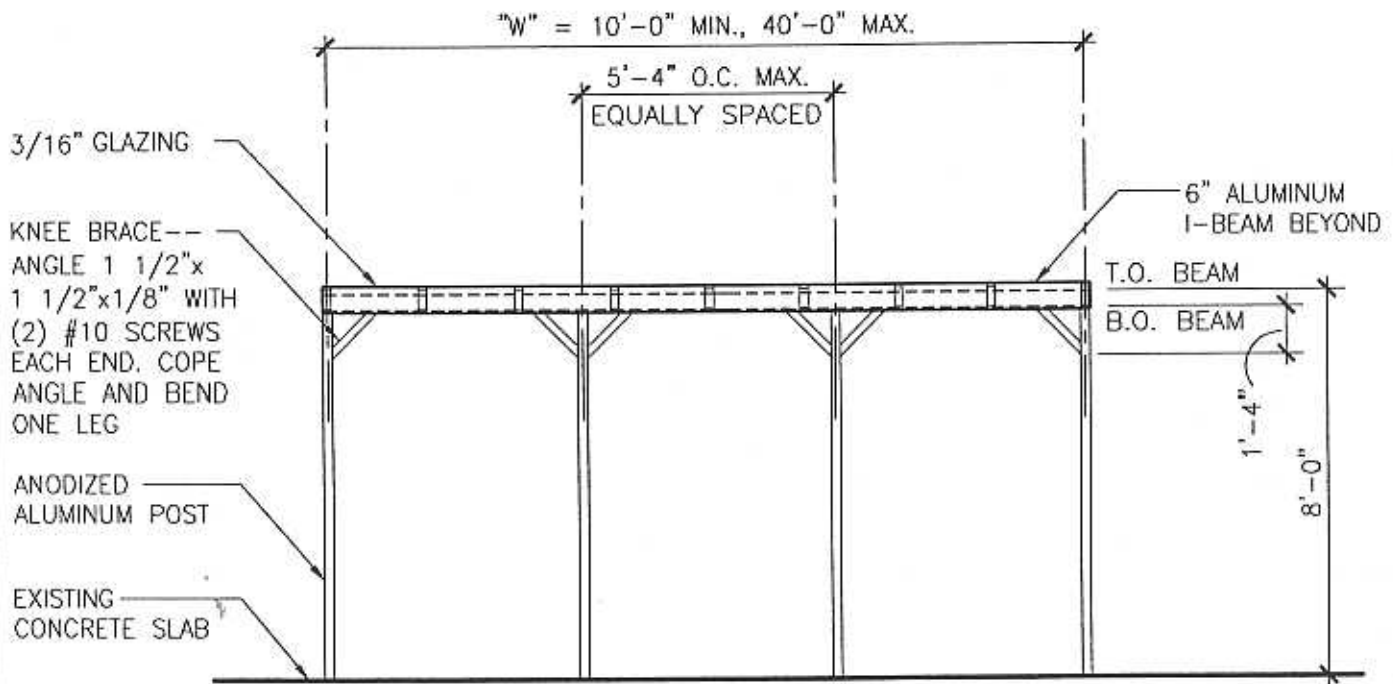
FIELD VERIFY

1. VERIFY EXISTING BUILDING HAS ADEQUATE STRENGTH TO RESIST THE ADDITIONAL LOADS FROM THE PATIO COVER.
-



NOT FOR
CONSTRUCTION

1 PLAN VIEW
SK2 1/4" = 1'-0"

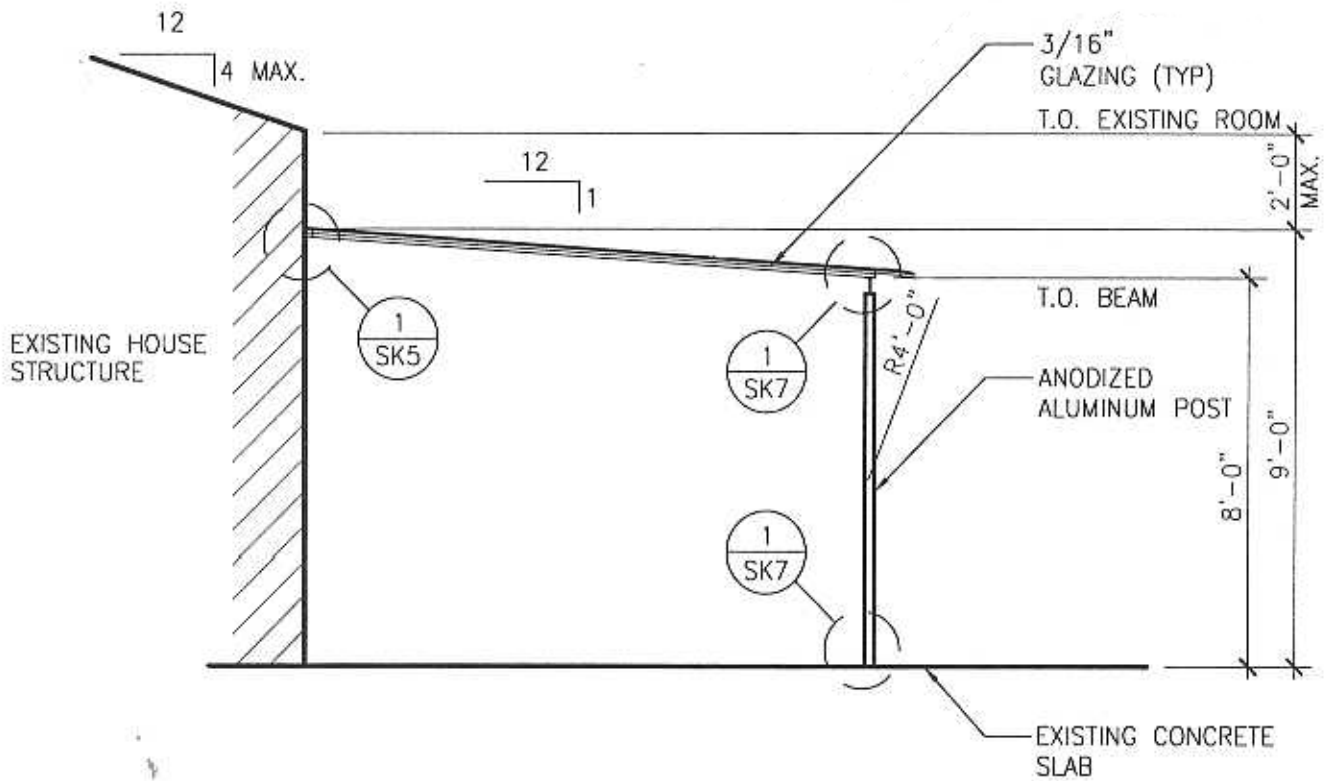


NOT FOR
CONSTRUCTION

1
SK3

FRONT ELEVATION

1/4" = 1'-0"

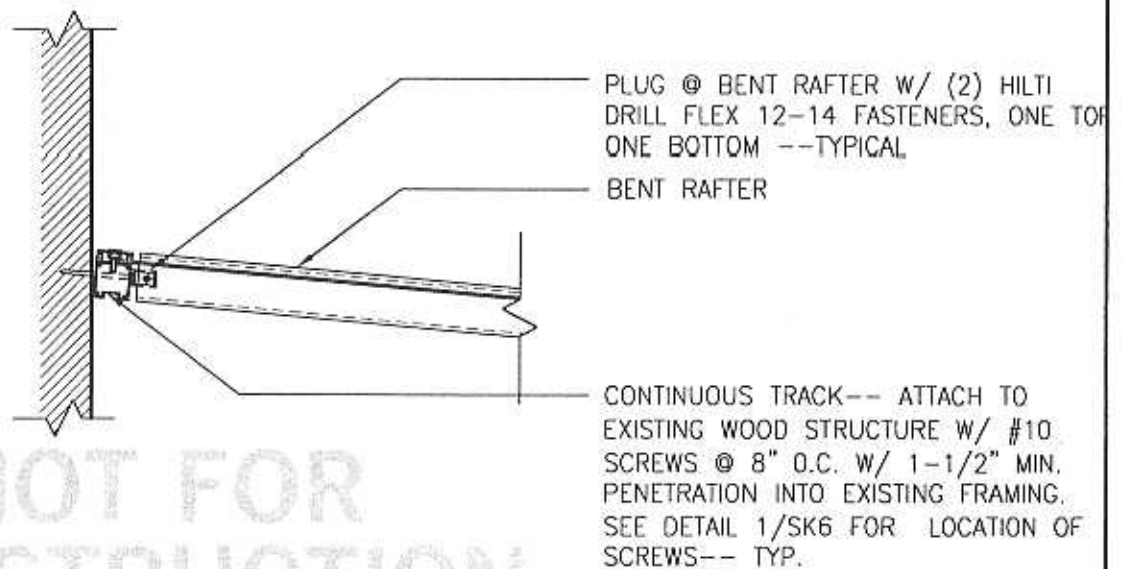
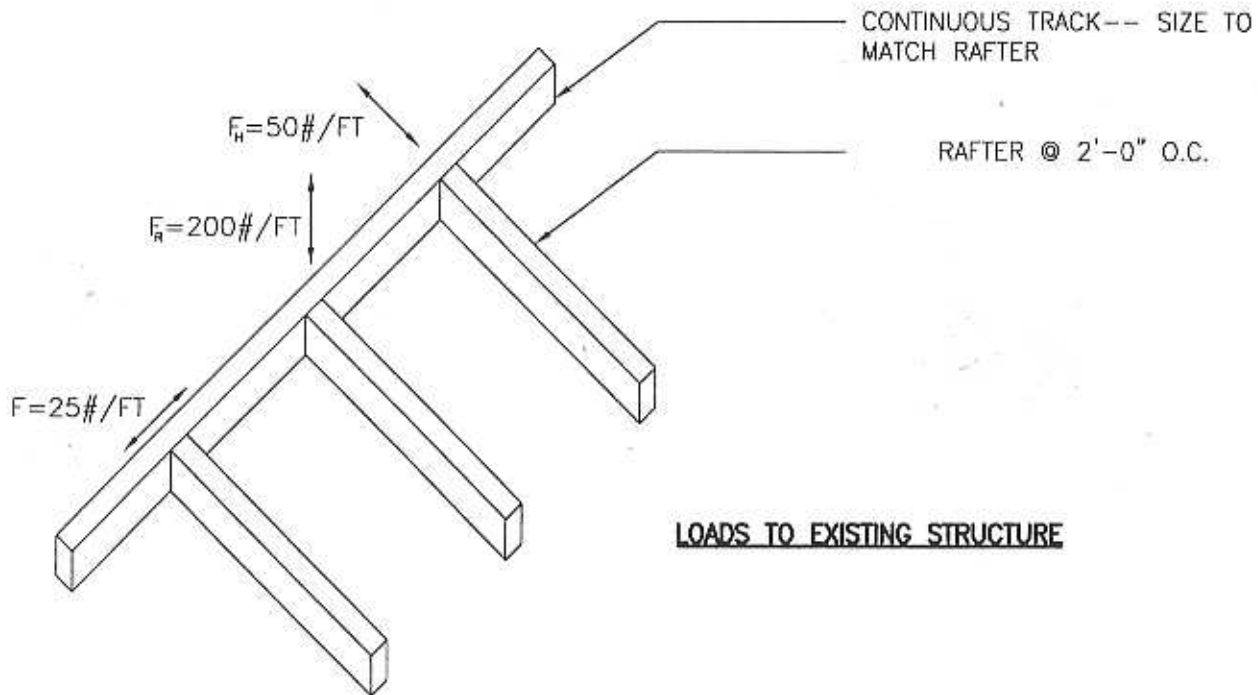


NOT FOR
CONSTRUCTION

1
SK4

END ELEVATION

1/4" = 1'-0"

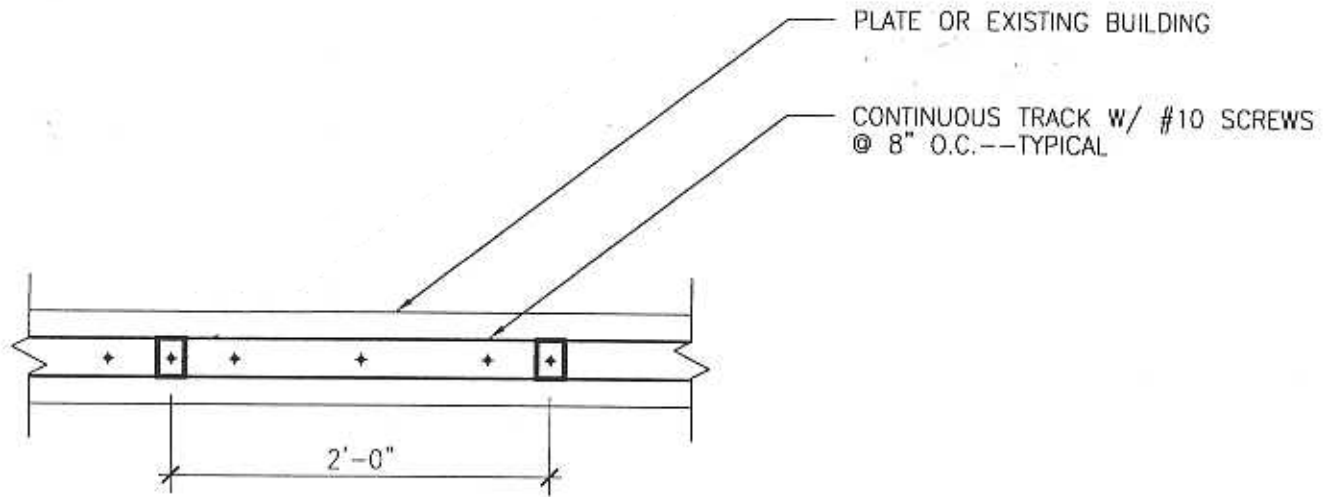


NOT FOR CONSTRUCTION

1 SECTION @ MOMENT FRAME

SK5

1" = 1'-0"

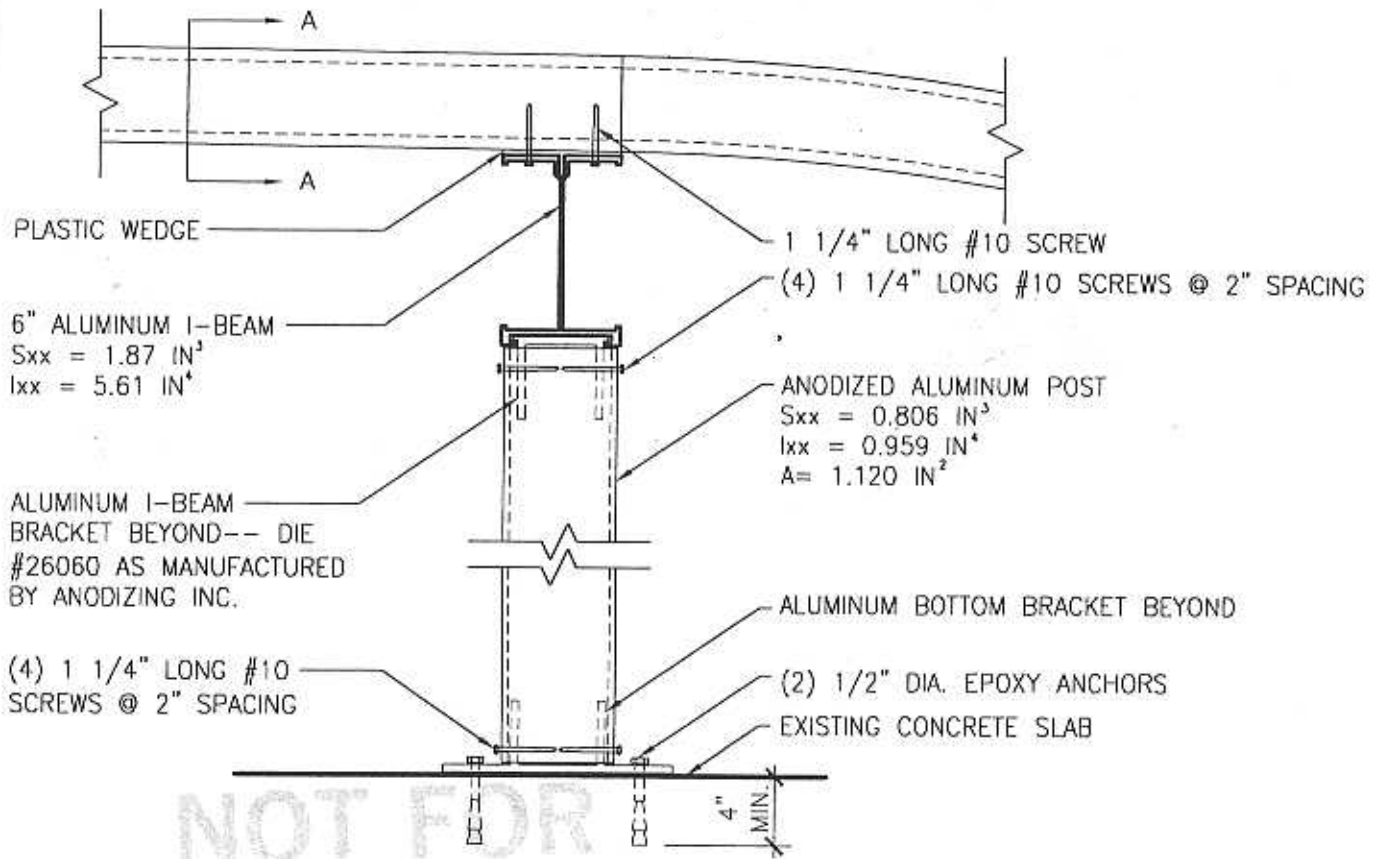


NOT FOR
CONSTRUCTION

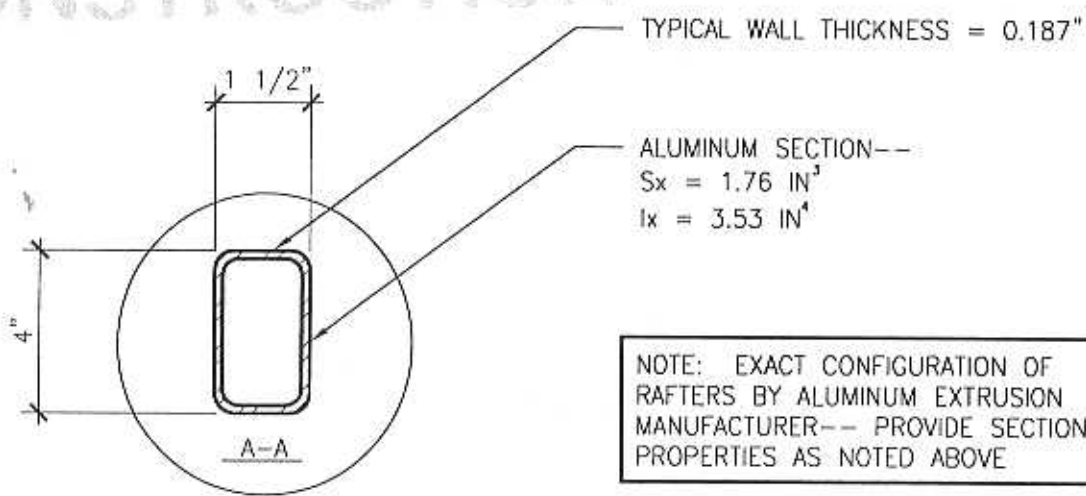
1
SK6

CONNECTION @ SILL & HEAD

1" = 1'-0"



NOT FOR CONSTRUCTION



NOTE: EXACT CONFIGURATION OF RAFTERS BY ALUMINUM EXTRUSION MANUFACTURER-- PROVIDE SECTION PROPERTIES AS NOTED ABOVE

1 SECTION
SK7 3" = 1'-0"